

THE POP-UP PATIO

MACT

DESIGN TEAM

TAMIA ARIAS-SOLOMON, CLAIRE DIMMICK, ALEXA ESGUERRA, AND MORIAH IVERSON

NOTABLE FEATURES

Customizable commercial cars, with glass, sawtooth roofs, elevated boardwalks, and private employee entries. Community gathering spaces with outdoor dining patios, viewing decks, and greenspace.

MATERIAL ADDITIONS

Timber accents contrast to original steel structure, bringing warmth into transformed trains with barn doors, built-in shelving, pergolas, wood flooring, decks, and stairways. Elevated boardwalk removes need for stair entry into Type I trains.

CONSTRUCTION PROCESS

Car interiors will be stripped while maintaining electrical systems. Finishes will be kept minimal to allow for customization. Site construction will vary based on permanence of intervention.

PROJECT DESCRIPTION

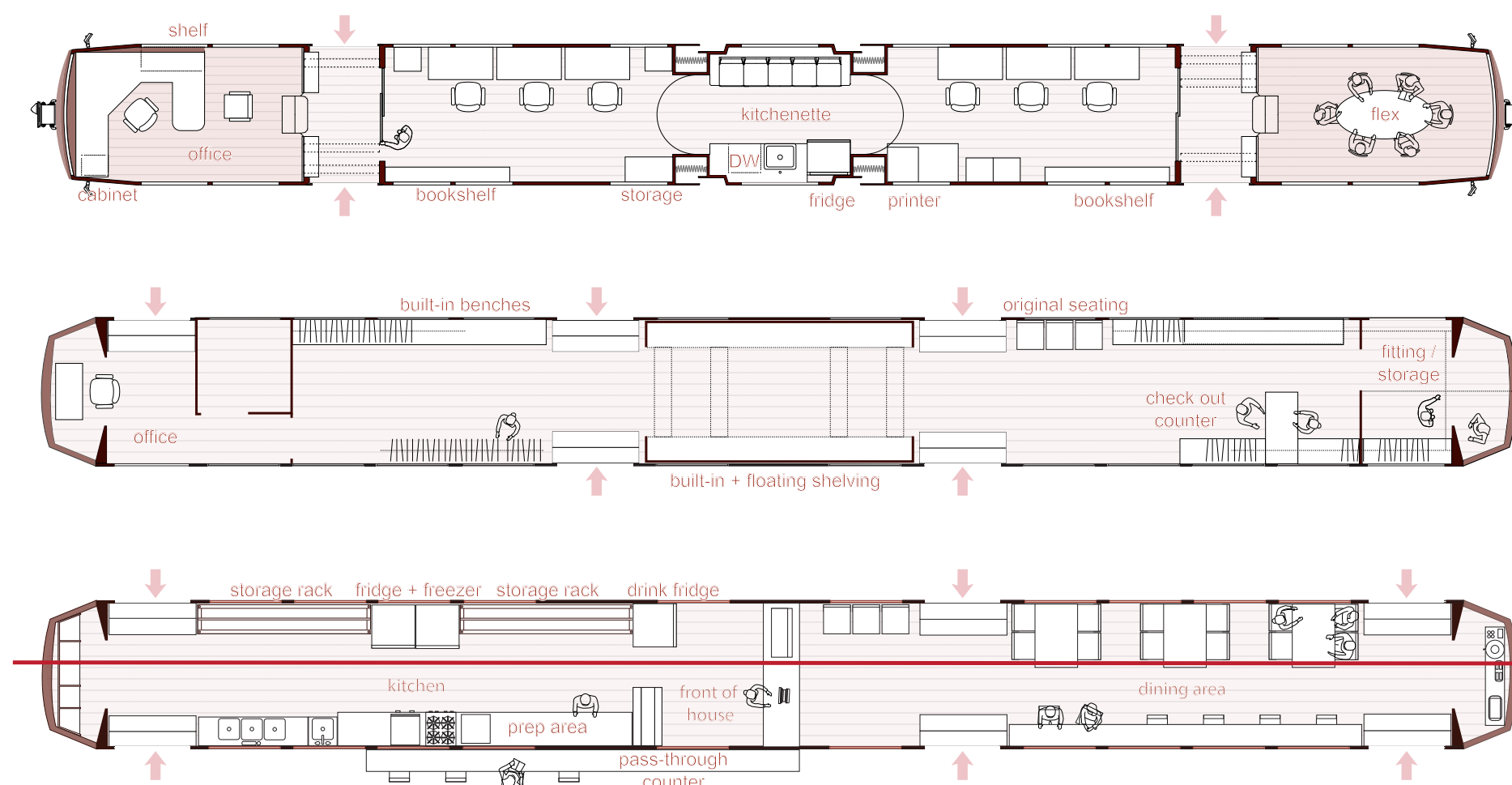
The Pop-Up Patio transforms retired MAX cars into commercial pop-up spaces available to under-served, aspiring businesswomen and non-binary folks. The project aims to address generational and gender wage gaps within Portland communities. In addition to commercial spaces, Pop-Up Patio offers consultations and marketing services to aid business owners in growing a customer base and brand identity.

An elevated boardwalk leads visitors to shopfronts, outdoor gathering nooks, and second-level viewing decks. Outdoor pergolas create connectivity between the cars, as well as shading for seating and circulation spaces.

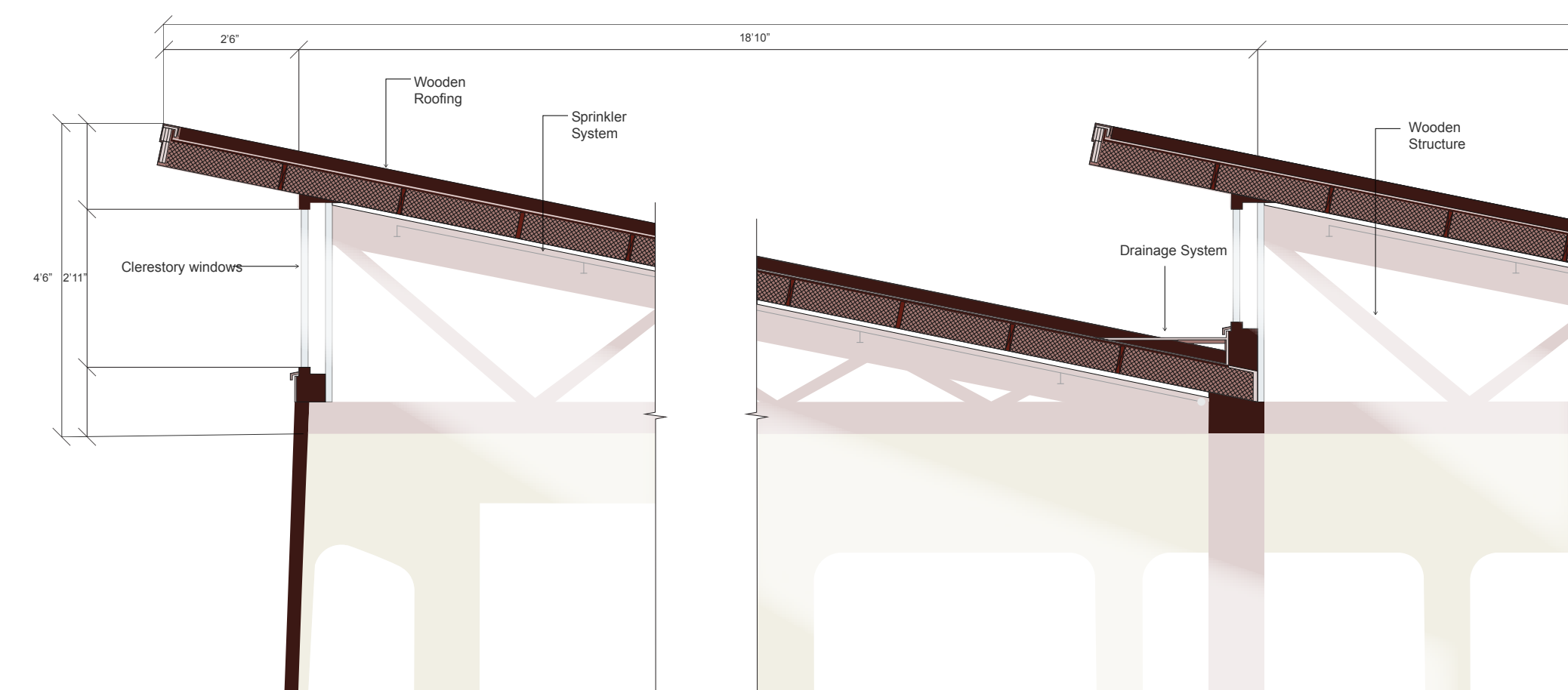
Type I trains are transformed into ever-changing retail stores and buzzing restaurants. Light-filled retail shops excite owners and visitors alike with a gorgeous merchandising area beneath its glass, sawtooth roof. Restaurants feature lively dining areas for customers with indoor/outdoor bar seating and original MAX seat booths. Type II trains act as administrative offices for Pop-Up Patio staff - ideal for consultations and other available services.

By providing a platform to aspiring business-owners, this project creates a bright community space for businesses to not only grow, but POP!

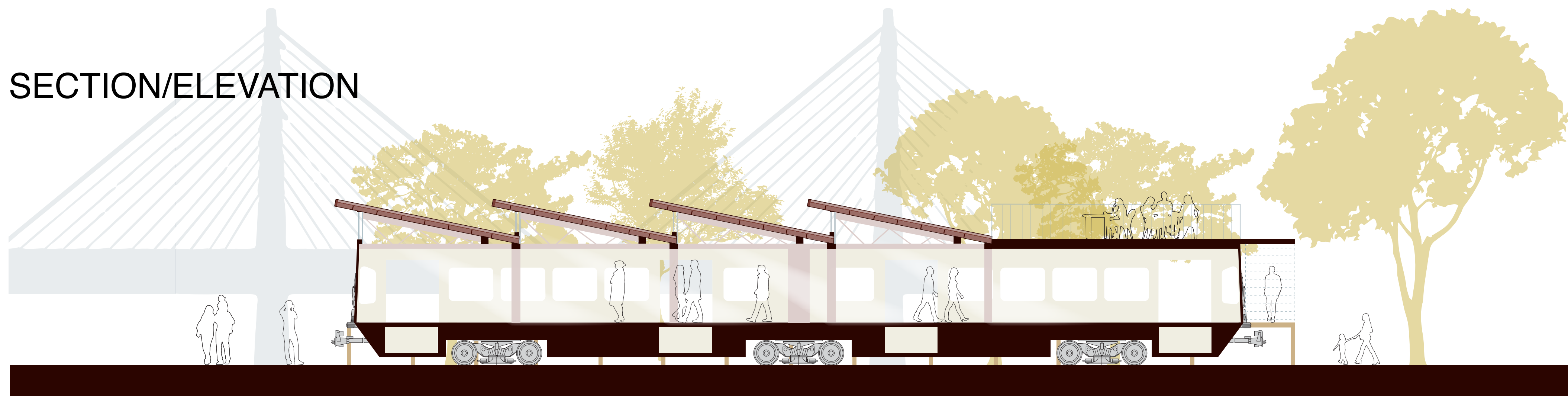
PLAN DIAGRAMS



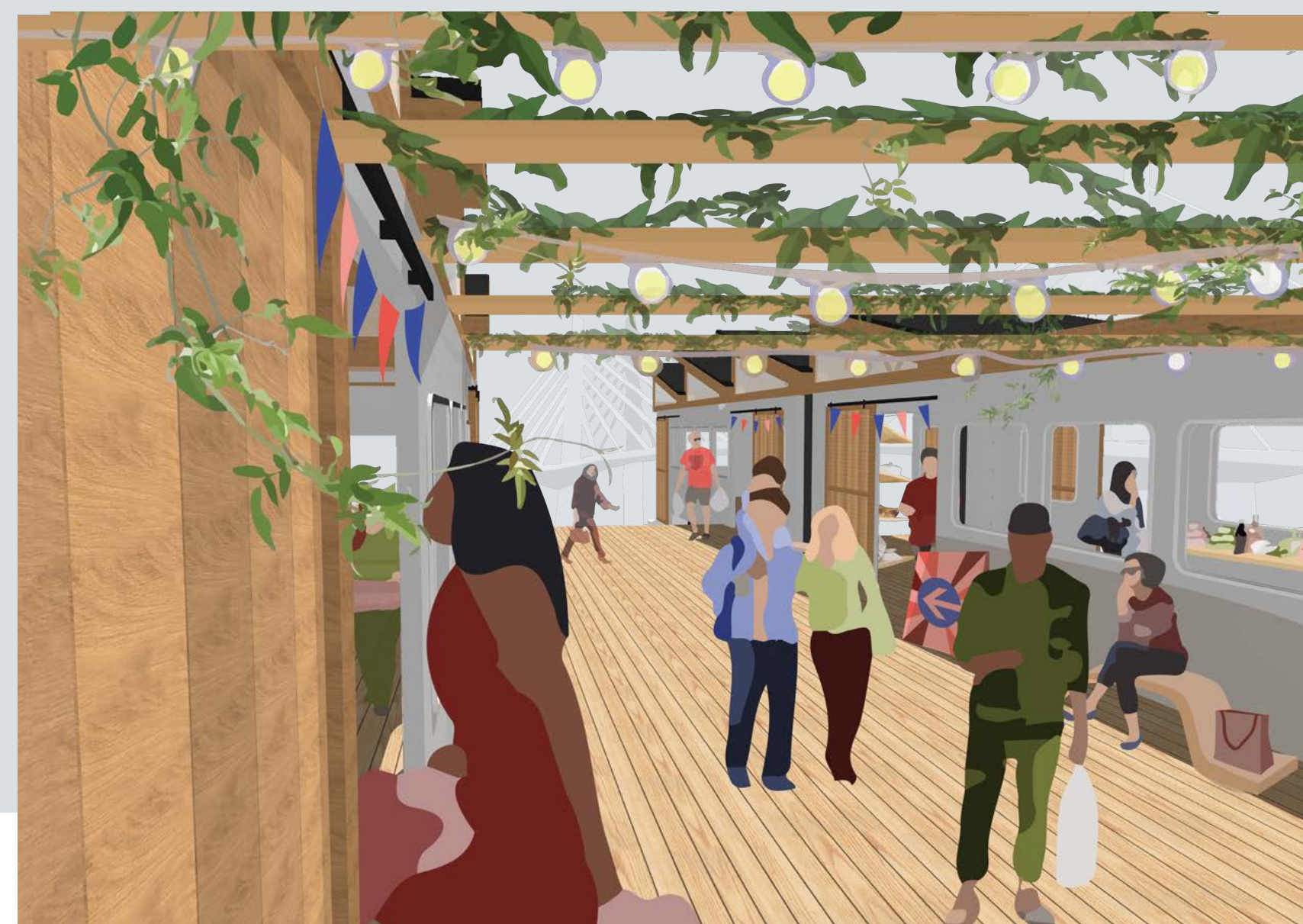
CONSTRUCTION DETAIL



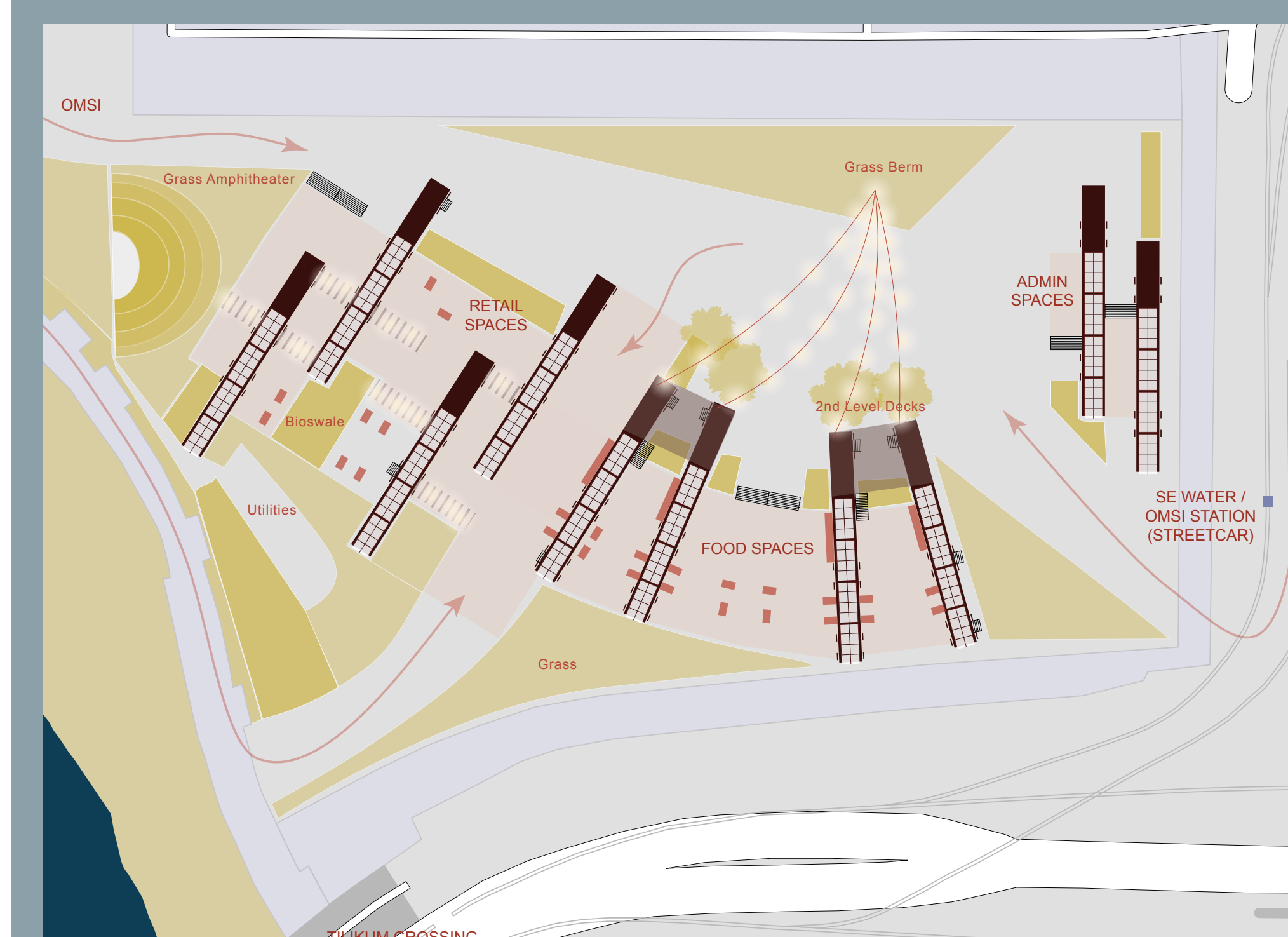
SECTION/ELEVATION



PERSPECTIVES



PROPOSED SITE PLAN



This site suggests ideal qualities such as proximity to transit, a central location, and stunning city views. This would make services accessible to a wide variety of community members in neighborhoods across Portland and generate public interest in a high-traffic area.

