

# BACK ON TRACK

MO+

## DESIGN TEAM

Maria Benavente and Olivia Snell

## MATERIAL ADDITIONS

This design proposal has several notable features that come in a kit of parts:

**+ WINDOW BAYS:** designed to use the existing window openings and provide more ventilation and shelves for storage.

**+ BATHROOM MODULE:** designed to use the existing door openings and carry plumbing into the housing unit.

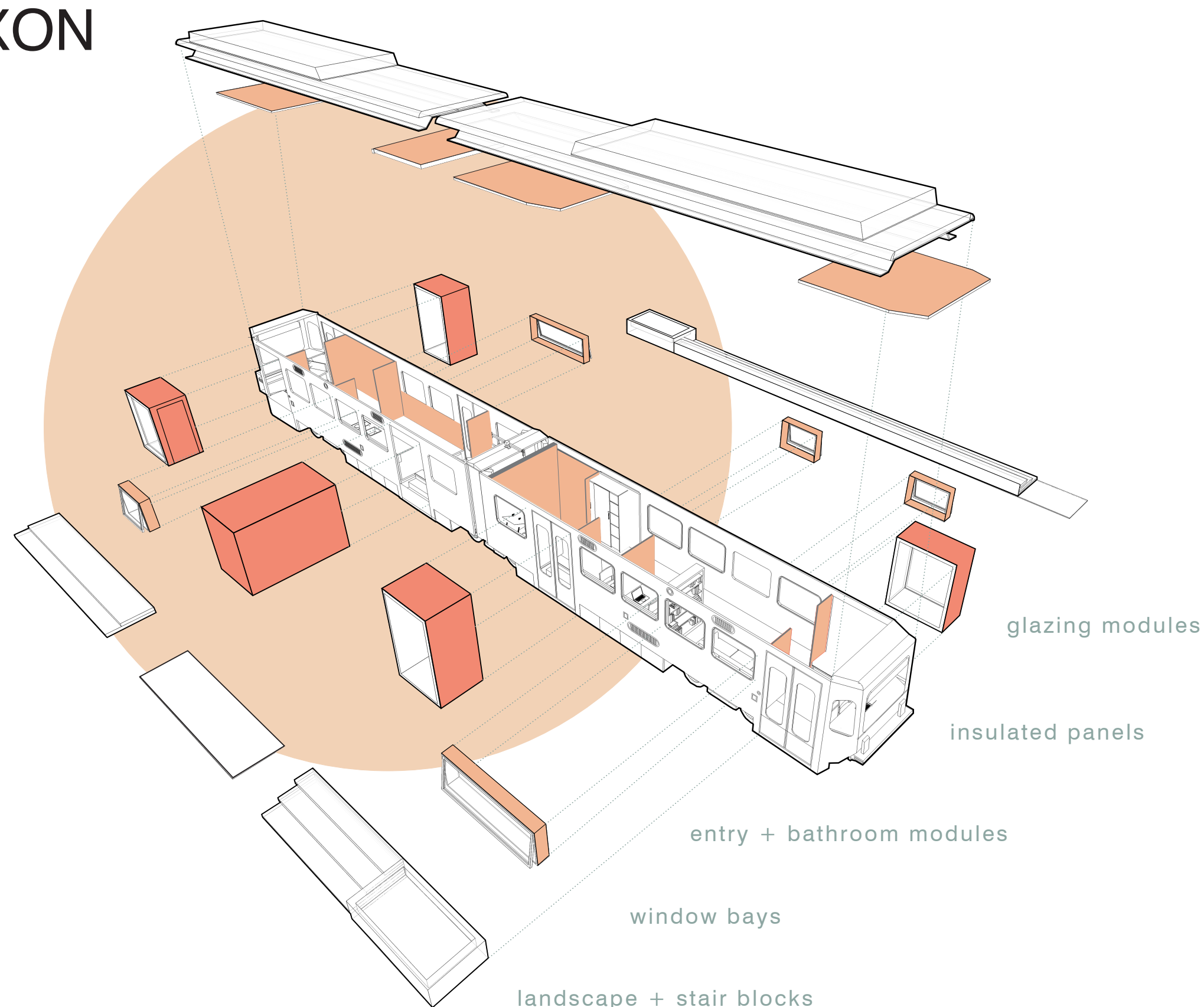
**+ ENTRY MODULE:** designed to use the existing door openings and provide wayfinding to the entries of the clinic and the housing unit.

**+ GLAZING MODULE:** designed to use the existing door opening and provide more natural light into the space and opportunities for seating.

## CONSTRUCTION PROCESS

1) demo all existing interior (seats, grab bars, electrical systems). 2) prepare for new interior structure. 3) fur out interior walls with insulated metal panels and reinforce structural elements. 4) add exterior modules. 5) add architectural elements to improve accessibility and integrate exterior public space.

## AXON



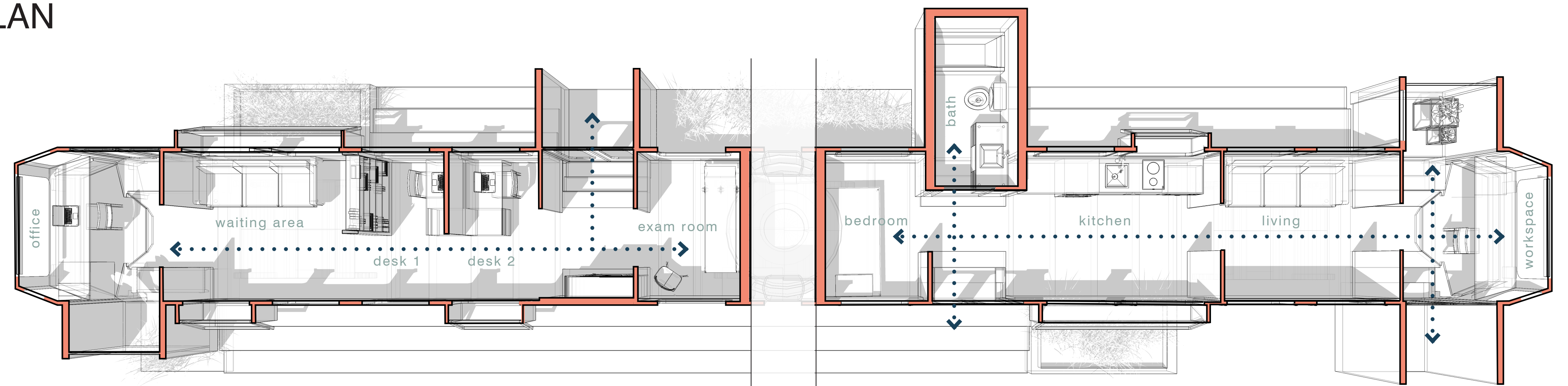
## PROJECT DESCRIPTION

As of January 2019, Oregon had an estimated 15,876 experiencing homelessness on any given day (U.S. Interagency Council on Homelessness). Approximately 44.8% of those experiencing chronic homelessness self-reported suffering from mental illness (PDX Monthly). This proposal is designed to provide housing and supportive social services for those who need it most.

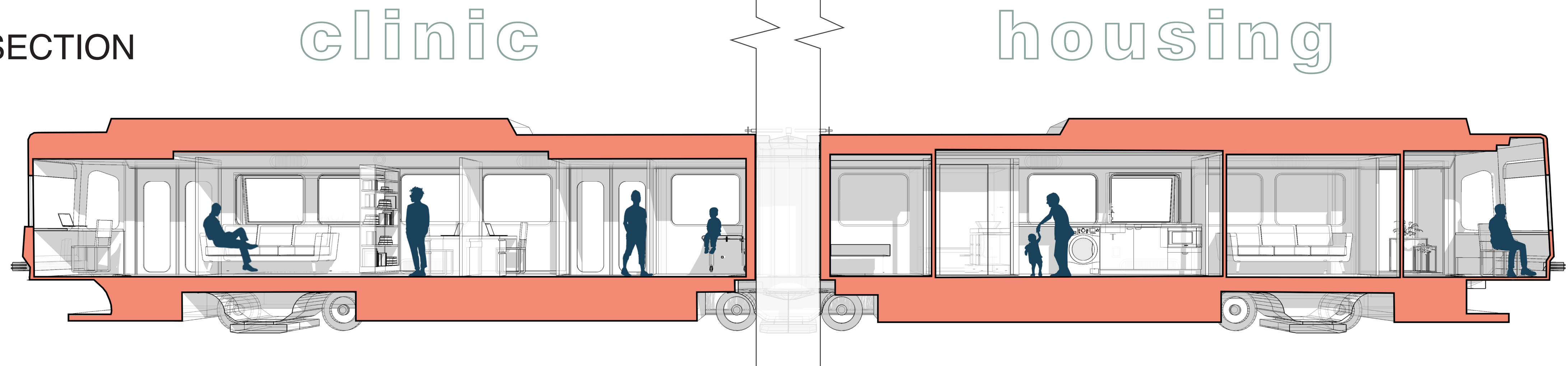
**CLINIC:** The first body of the train car has been transformed into a clinic, providing mental health and social services. The objective is to provide care to vulnerable populations experiencing barriers to accessible healthcare such as homelessness, job insecurity, or unreliable transportation. It has been designed to provide desk spaces for a social worker and a mental health practitioner, along with a private office for a case manager. Together, they can provide free legal aid, crisis intervention, and counseling.

**HOUSING:** Behind the articulation joint, the second body has been designed into 1BR/1BA housing unit. The housing module would serve as temporary housing for an occupant who is transitioning from homelessness. It has been designed to accommodate a single resident comfortably, or even a small family. Health and social services would be on-site to help the in-house resident on the path to stable employment and permanent housing.

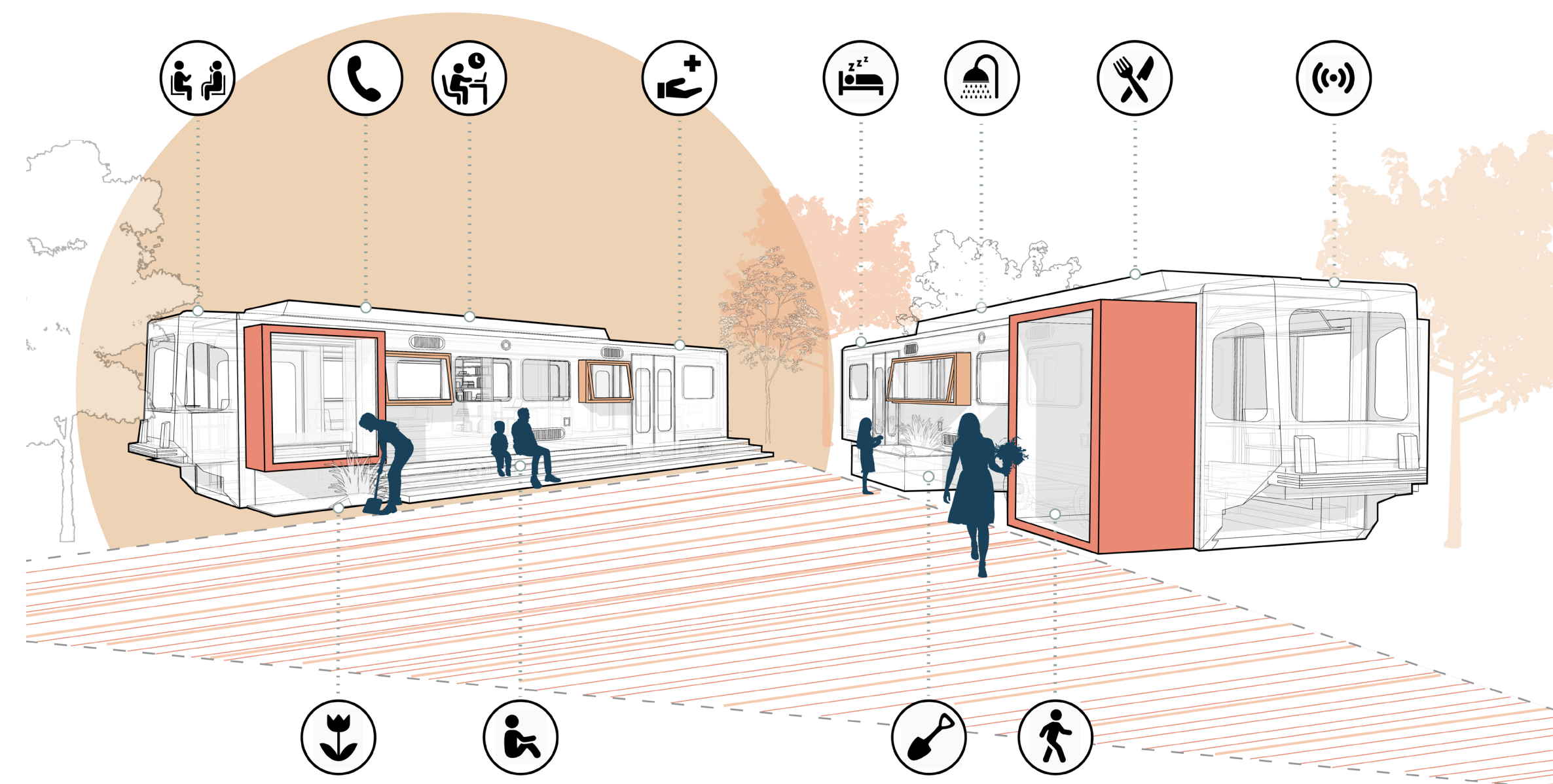
## PLAN



## SECTION



## PERSPECTIVE



## SITE STRATEGY

**RURAL:** for more spacious sites, housing modules can be centered around courtyards with clinic modules mixed between.

**URBAN:** in a city context, housing modules can be arranged linearly with a single clinic module.

